



PRODUCT DISPLAYS & CHARGING STATION RENTALS

Archery Trade Association

G136020122

Kentucky Exposition Center | Louisville, KY

January 7 - 9, 2022

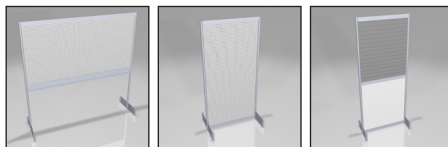
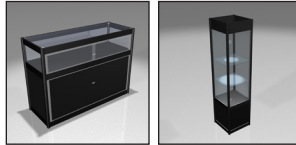
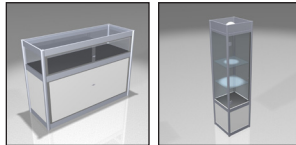
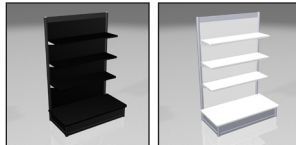
ONLINE & DISCOUNT DEADLINE:* WEDNESDAY, DECEMBER 8, 2021

* Order with complete Method of Payment must be received before Discount Deadline date to receive discounted pricing. Additional Rush charges may be applied to orders placed after deadline or on-site.

Choose Your Unit & Customize to Fit Your Products!

AVAILABLE COLORS FOR ALL PRODUCTS:

Metal Colors: Black (06) or Silver (15) and **Panel Colors:** White (03) or Black (06)



Product Displays

CODE	ITEM	QTY	ONLINE	DISCOUNT	REGULAR	METAL COLOR	PANEL COLOR
66277	Gondola 3' 6" (l) x 4' 6" (h) x 1' 3" (d)		\$437.40	\$503.00	\$563.35		
66278	GL1 5' 4" (l) x 8" (h) x 1' 3" (d) Graphic Sizes: 674mm x 1682mm		\$772.55	\$888.45	\$995.05	Silver ONLY	
66279	GL2 4' 3" (l) x 7" (h) x 1' 3" (d) Graphic Sizes: 674mm x 1682mm		\$731.00	\$840.65	\$941.55	Silver ONLY	

Showcases

CODE	ITEM	QTY	ONLINE	DISCOUNT	REGULAR	METAL COLOR	PANEL COLOR
66270	Quarterview Showcase (Qtrview) 4' 6" (l) x 3' 3" (h) x 1' 9" (d)		\$826.10	\$950.00	\$1,064.00		
66272	Square Showcase (Square) 1' 9" (l) x 7" (h) x 1' 9" (d)		\$891.45	\$1,025.15	\$1,148.15		

Charging Unit

CODE	ITEM	QTY	ONLINE	DISCOUNT	REGULAR	METAL COLOR	PANEL COLOR
66430	Phone Charging Station (PCS) 3' (l) x 6' 3" (h) x 1' 9" (d) Graphic Size: 250mm x 700mm		\$1,553.55	\$1,786.60	\$2,001.00		Black ONLY

Perforated/Peg Boards

CODE	ITEM	QTY	ONLINE	DISCOUNT	REGULAR	METAL COLOR	PANEL COLOR
66148	8' x 4' Pegboard Panel (PerfH)		\$151.85	\$174.65	\$195.60	Silver ONLY	n/a
66149	4' x 8' Pegboard Panel (PerfV)		\$151.85	\$174.65	\$195.60	Silver ONLY	n/a
50104	6" Pegs - 1 dozen (6"Pegs)		\$24.85	\$28.60	\$32.05	n/a	n/a
66147	3.5' x 8' Slat Wall, Grey (Slatwall)		\$294.15	\$338.25	\$378.85	Silver ONLY	n/a

TOTAL ESTIMATE	\$ _____
TAX (All tax rates are subject to change)	6.00%
AMOUNT DUE	\$ _____

Submission of this form indicates you read and accept the Payment Policy and Terms & Conditions. All orders cancelled by the exhibitor within 30 days of first day of exhibitor move in day may be subject to cancellation fees up to 100% of the total order, based upon the status of move-in, work performed and/or Shepard set-up costs or expenses.

COMPANY NAME: _____ BOOTH NUMBER: _____

CONTACT NAME: _____

EMAIL ADDRESS: _____



Email completed form to: exhibits@shepardes.com

shepardes.com