



PRODUCT DISPLAYS & CHARGING STATION RENTALS

Archery Trade Association

1191470123

INDIANA CONVENTION CENTER | Indianapolis, IN

January 11 - 13, 2023

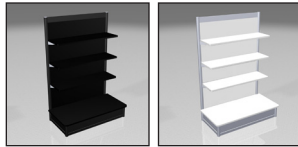
ONLINE & DISCOUNT DEADLINE:* MONDAY, DECEMBER 12, 2022

* Order with complete Method of Payment must be received before Discount Deadline date to receive discounted pricing. Additional Rush charges may be applied to orders placed after deadline or on-site.

Choose Your Unit & Customize to Fit Your Products!

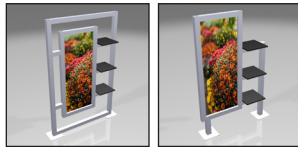
AVAILABLE COLORS FOR ALL PRODUCTS:

Metal Colors: Black (06) or Silver (15) and **Panel Colors:** White (03) or Black (06)



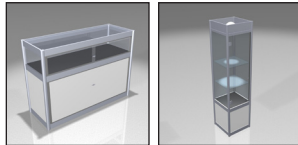
Product Displays

CODE	ITEM	QTY	ONLINE	DISCOUNT	REGULAR	PANEL COLOR
6627703 (w) 6627706 (b)	Gondola 3' 6" (l) x 4' 6" (h) x 1'3" (d)		\$446.15	\$513.05	\$574.60	
6627803 (w) 6627806 (b)	GL1 5' 4" (l) x 8' (h) x 1' 3" (d) Graphic Sizes: 674mm x 1682mm		\$788.00	\$906.20	\$1,014.95	
6627903 (w) 6627906 (b)	GL2 4' 3" (l) x 7' (h) x 1' 3" (d) Graphic Sizes: 674mm x 1682mm		\$745.60	\$857.45	\$960.35	



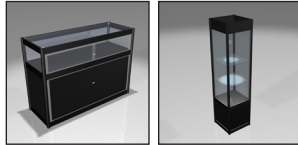
Showcases

CODE	ITEM	QTY	ONLINE	DISCOUNT	REGULAR	PANEL COLOR
6627003 (w) 6627006 (b)	Quarterview Showcase (Qtrview) 4' 6" (l) x 3' 3" (h) x 1' 9" (d)		\$842.60	\$969.00	\$1,085.30	
6627203 (w) 6627206 (b)	Square Showcase (Square) 1' 9" (l) x 7' (h) x 1' 9" (d)		\$909.30	\$1,045.70	\$1,171.20	



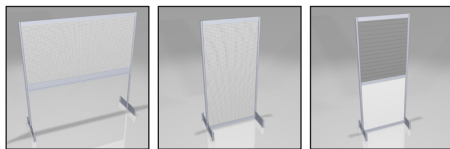
Charging Unit

CODE	ITEM	QTY	ONLINE	DISCOUNT	REGULAR	PANEL COLOR
66430	Phone Charging Station (PCS) 3' (l) x 6' 3" (h) x 1' 9" (d) Graphic Size: 380mm x 710mm		\$1,584.60	\$1,822.30	\$2,041.00	Black ONLY



Perforated/Peg Boards

CODE	ITEM	QTY	ONLINE	DISCOUNT	REGULAR
66148	8' x 4' Pegboard Panel (PerfH)		\$154.90	\$178.15	\$199.55
66149	4' x 8' Pegboard Panel (PerfV)		\$154.90	\$178.15	\$199.55
50104	6" Pegs - 1 dozen (6"Pegs)		\$25.35	\$29.15	\$32.65
66147	3.5' x 8' Slat Wall, Grey (Slatwall)		\$300.05	\$345.05	\$386.45



TOTAL ESTIMATE	\$ _____
TAX (All tax rates are subject to change)	8.25%
AMOUNT DUE	\$ _____

Submission of this form indicates you read and accept the Payment Policy and Terms & Conditions. All orders cancelled by the exhibitor within 30 days of first day of exhibitor move in day may be subject to cancellation fees up to 100% of the total order, based upon the status of move-in, work performed and/or Shepard set-up costs or expenses.

COMPANY NAME: _____ BOOTH NUMBER: _____

CONTACT NAME: _____

EMAIL ADDRESS: _____



Email completed form to: exhibits@shepardes.com